

Regulation on the recognition, establishment and operation of research into the University Luciana Blaga from Sibiu

1. Activity of scientific research and unity of research in ULBS

The activity of research, development, innovation (generically called *research*) is carried out in the ESTABLISHMENTS of research of type institute, center or group of research, after as follows:

Unit type of research	the STRUCTURE organizational *	Level of subordination	Laboratories of research / creation artist integrity	areas of research	Number States the holder LBUS
Institute of research	University	The Board of administration /	≥ 5	≥ 5	≥ 40
Center of research	Faculty	Council faculty /	≥ 2	≥ 2	≥ 8
Group of research	Department	Council Department	≥ 1	≥ 1	≥ 3
	Type unity of research				
	Research fundamental	Research applicative	Artistic creation and promotion culture		

* Approval this methodologies assume, on way of consequence, the modification ULBS organizational chart at the level of university-type academic structures, faculty, by introduction structures new: institute of research and respectively center of research.

A research group may be affiliated with a research center or an institute research; a center of research may be to join at a research institute.

areas of * recognized research to the LBUS into the the Research fundamentally are:

1. Math and Informatics
2. Chemistry
3. Physics
4. science engineering
5. Science mATERIALS
6. science earth
7. Biology and Ecology
8. Medicine
9. science life applied and BIOTECHNOLOGY
10. science sociable and economy
11. science humanities

areas of research* thankful to the LBUS into the the Research applications are:

1. The technology Information and Communications;
2. Energy;
3. Medium;
4. Health;
5. Agriculture, safety and security grocery shop;
6. Biotechnology;
7. Materials, processes and products innovative;
8. Space-bar and security;
9. Research socioeconomic and humanist.

*For centers of creation artist and promotion culture it will choose for areasspecific from the two categories of areas

areas will be Updated once time with endorsement sTRATEGY of research 2014 - 2020 and ofplan national of research.

units of research can be of more types:

Basic research - The units that aim to approach this type of research are will focus on studies based on epistemic curiosity. Studies are focused on discovery, innovation or solving problems that ultimately lead to a better understanding of principles of the functioning of the world. The results of these studies contribute to the advancement of knowledge in one or more field / branch of science / branch without immediate applicability in natural, economic or social environment. Usually basic research involves exploring some unstudied or little-analyzed scientific fields and leads to discoveries, modifications or reversals of theories or paradigms.

Applied research (capitalization and technology transfer). Research units that falls into this type is based on the translation of the theoretical realities existing at a given time from science in realities practical, in public, economic or social goods or policies. The results of these studied have application immediate or predictable in the environment natural, economic or social.

Note. We are aware that this classification has an exaggerated didactic character discriminatory, the character hybrid of Research (fundamental and application) can be meeting into the reality. Thus, for example, there is "applied" research that contains a significant part of fundamental exploratory research. The history of science shows surprising practical applicability of some concepts considered, at one time, purely theoretical (for example the use of algebra logic of G. *Boole* in the practice of computational systems). Within ULBS both categories are considered of equal importance, the only discrimination being possible through the results produced at the knowledge, attestable through publications within main flow.

Artistic creation and promotion of culture - Research units in this category aims at both the conceptual analysis and the production of cultural-artistic phenomena. Component of research refers to the aesthetic, cognitive and socio-economic relevance of cultural processes over time what the compound PRAGMATIC it busy of curing heritage cultural, but and of production

innovative works and exploring ways of inserting and intervening in culture the field of contemporary social life. Research, creation and promotion activities specific to this type of units have an interdisciplinary and intercultural character.

There is two categories of situations looking recognition / establishment ESTABLISHMENTS of research:

- the research unit is established on the structure of an existing research center, being its recognized title and activity previous;
- unity of research It is completely nine.

Indifferent of situation, must traveled procedure of to the point 2 on to recognition / creation ESTABLISHMENTS of research

2. Recognition / creation and evaluation periodic of units of research

file with the proposal of foundation of of a units of research contains:

- application of establishment / recognition of unity of research, conformable formulation from Appendix 1;
- sheet of defining of unity of research conformable model from Appendix 2;
- Plan of activities; conformable MODEL from Appendix 3
- status unity of research, conformable MODEL from Appendix 4.

The process of evaluation and approval of the establishment of research units as well as evaluation annual report of the scientific research carried out by the research units, it place different depending of type unity of research, according to the table May down:

Steps increation unit of research Type unity of research	submission file of foundation	Evaluation and approval Case	endorsement Founded unit of research	Issuance decision of foundation	Annual opinion regarding the activityunit of research
Institute of research	Registry office university	Council of administration and Senate Committee for research scientifically	Senate	Rector	The Board of administration and commission SENATE for research scientifically
Center of research	Secretariat faculty	Council faculty and Senate Committee for research scientifically	Senate	Rector	Council faculty commission SENATE for research scientifically
Group of research	Secretariat Department	Council faculty	Council faculty	Dean	Council faculty

3. PROVISIONS FINAL

The existing scientific research centers at ULBS at present and which, until the date of 20.12.2013, will not submit the related documentation in order to be recognized as units of research scientific, conformable Rulemaking from the present regulations, will lose recognition the quality of center of research scientific.

Appendix 1

**Application for establishment / recognition of the research center /
group *(se will select, as appropriate)**

Dear mister Rector / Dean,

the undersigned with function of .

and degree scientific of , employee at the University

.yourself PLEASE of approve creation **institute / center / group of research**

.....

attach this applications

- sheet of defining of activity
- status unity
- The plan of ACTIVITY

Date,

Signature ,

***For institute of research it will elaborate a additional methodology of foundation and
working**

sheet OF DEFINING A activity ESTABLISHMENTS OF RESEARCH

I. THE NAME unity OF RESEARCH:

II. THE NAME UNIT OF RESEARCH INTO THE LANGUAGE ENGLISH :

III. Unit of research It is new established?

- Yes
- Not

If to the question previous you answer with "Not", yourself Please to Reply into the continuation to next question

- **Date and number decision of foundation of center of research:**
- **The principal center of research**

III. MISSION unity OF RESEARCH

(In formulation mission it will start of to the character unity of research: institute / center / group and respectively by the type of research unit: Fundamental research / applied research / and respectively Creation artistic and promotion culture)

IV. INFORMATION OF IDENTIFICATION

1. name and first name director unity of research:

Minimum requirements mandatory on which must to they SATISFIED the principal unity of research are:

- To have contract of the work with ULBS, that and holder
- Fulfillment of the standards corresponding to the position he / she holds in the state of positions in the last 2 years: minimum 600 hours of research for the research group coordinator, at least 1200 hours of research for the principal center of research and minimum 1800 de hours of research for the principal institute of research.
- The members of the research group will prove in the last two years the minimum research standard for the position teaching
- opinion looking ACHIEVING this standard It is given of by service research, development iNNOVATION

2. Degree didactic:

1. Professor
2. Lecturer
3. Lecturer / head of construction

3. FACULTY:

4. DEPARTMENT:



ULBS

Universitatea "Lucian Blaga" din Sibiu

Ministerul Educației Naționale

Universitatea "Lucian Blaga" din Sibiu
Prorector Cercetare Științifică și Studii Doctorale

-
5. Address www (required for institutes and center)
 6. Address unit:
 7. Phone:
 8. Fax:
 9. E-mail:
 10. The person of contact:
 11. Address:
 12. Phone:
 13. Fax:
 14. E-mail:

III. FIELD / AREAS RESEARCH APPROACH *:

areas of * recognized research to the LBUS into the the Research fundamentally are:

1. Math and Informatics
2. Chemistry
3. Physics
4. science engineering
5. Science mATERIALS
6. science earth
7. Biology and Ecology
8. Medicine
9. science life applied and
- BIOTECHNOLOGY
10. Science social and economy
11. Science humanities

areas of research* thankful to the LBUS into the the Research applicative are:

1. Information technology and Communications;
2. Energy;
3. Medium;
4. Health;
5. Agriculture, safety and security grocery shop;
6. Biotechnology;
7. Materials, processes and products innovative;
8. Space-bar and security;
9. Research socioeconomic and humanist.

it will argue with concrete dates if it choose for May more than a domain.

IV. POSITIONING unity OF RESEARCH (se will do what into the agreement with mission)

Type unity of research:	Research fundamental	Research applicative	Artistic creation and promotion culture
Institute of research			
Center of research			
Group of research			

V. NUMBER OF MEMBERS OF THE ULBS *:

LIST States unity OF RESEARCH

(inclusive the principal / coordinator)

Nr. No.	name and first name	degree TEACHING	Number of hours of research into the the year		Signature
			2012	2013	
1					
2					
3					
4					
5					
6					
7					
8					
9					
10					

11					
Members from outside LBUS					
Nr. Crt.	name and first name	Doctor's degree (Yes No)	place of the work	Signature	
1					
2					
3					
4					

*A the person can is part of it from the team to one units of research.

- Into the list can be included and specialist from outside LBUS
- it will attach CV - ul and list of works for the director and every member of team



ULBS

Universitatea "Lucian Blaga" din Sibiu

Ministerul Educației Naționale
Universitatea "Lucian Blaga" din Sibiu
Prorector Cercetare Științifică și Studii Doctorale

**VI. RESEARCH LABORATORIES IN THE STRUCTURE OF THE RESEARCH UNIT -
SHORTEN DESCRIPTION**

Appendix 3

PLAN OF ACTIVITY of unity OF RESEARCH FOR THE YEAR 2014

- **The plan will target the activity of the research unit as a whole and not independent activitiesmembers (research projects, scientific events, scientific papers, symposiums, actions with social environment - economic etc.)**

Appendix 4

STATUS unity OF RESEARCH (center and Groups of research)*

Chapter I. pROVISIONS generous

Art. 1. The name *unity of research*

Art. 2. (1). *unit of research* it established and working according with:

- the law Education Nation no. 1/2011, with Completion and amendments into the force
- Emergency Ordinance no. 57/2002 on research scientific and development technological, with changes and Completion subsequent
- Charter university "Lucian Blaga" from Sibiu
- Regulation of progress of activity scientifically and of research into the University LucianaBlaga from Sibiu.
- Other acts regulations into the material

Art. 3. headquarters *unity of research* It is into the Sibiu, Str.Nr., phone:, site web:

Art. 4. (1). mission *unity of research* It is

(2) Within the *research unit*, university teachers work, researchers, PhD students and master students from Lucian Blaga University of Sibiu as well as researcher associates (If It is the case is keep going).

Art. 5. Duration: *The research unit* carries out its activity for an indefinite period, from the date of approval of this Statute by the Senate "Lucian Blaga" University of Sibiu.

Chapter II. Purpose and object of activity

Art. 6. The goal *unity of research* consist into

the:

(The mission of the research unit will be detailed here, referring to the type of unit: Research fundamental / RECOVERY research and transfer technological / consultant / Culture promotion)

*** An additional methodology will be developed for the research institute and working**

Art. 7. areas of competence of *unity of research* - it will enumerate domains, through selection from Annex C.

Art. 8. (1). results activity of research scientifically it reflected into the:

- a) were published into the volumes of events scientific, into the the annals optional or into the magazines of specialty from the country and abroad.
- b) communication scientifically on plan national and international;
- c) Books, treat, manual, magazines with content scientific unpublished, published and submitted to library ULBS;
- d) Patents, patent, other products with rights of property intellectual;
- e) rEPORTS Research periodicals and / or annual;
- f) Systems, role models, rEPORTS of group and individual, solutions of problems TOGETHER of DOCUMENTATION corresponding to;
- g) construction ("Works") and events with character cultural and artistic (just for centers of type

Creation artist and promotion culture

(2). results activity of research scientifically into the forms present to Article (1) are owned by Lucian Blaga University of Sibiu, which will exercise copyright and rights his, according to law.

Chapter III. structure of organization and operation -

Art. 9. The organization and functioning structure of the research institute is presented in Appendix B to this statute.

Art. 10. Council scientific (CS) of university (respectively council faculty / department) is the body empowered to coordinate the activity of research units. CS se meets once a year to analyze the activity of the research unit and to establish the directions of future development. At the request of the director of the research unit, the CS may discuss issues I hold of functioning current a research unit.

Art. 11. (1). bodies of lead and administration of unity of research are council scientific director, director and secretary scientific

(2) The Scientific Council consists of the director of the research unit, the scientific secretary and coordinators compartments of research

(3) Council Scientific it gathers of three ori / an or or of by or It is necessary, to convening the director or at the request of at least half the number of members of the unit research. Present of 2/3 from all States his It is needed for of ensure validity deliberations. Decisions are made by a simple majority of the members present; in the event of a tie votes, vote The director of the Center is decisive.



(4). powers Councils Scientific of unity of research are:

- coordinates and correlated activity teams into the view ACCOMPLISHMENT end provided into the present status and in the programs operational;
- approves the project of budget and IMPLEMENTATION budget;
- develop rEPORTS of activity annual and periodicals;
- approves programs of research, themes and projects of research, partnerships;
- ensure development material base;
- identify resources financing for operation in good conditions.

(5). The director shall ensure the operational management of the research unit. He is appointed through how provided of law, with opinion previous of council scientific of unity of research.

powers director are:

- represent unity of research into the report with structures academic, of research and administration from ULBS ;
- coordinates activity operational of unity of research conformable plan operational proposed and endorsed by the CS;
- convened and lead meetings CS;
- show the report annual / periodic into the CS and put into the practice all recommendation and decision this for;

(6). The Scientific Secretary coordinates the development of scientific activities at the level of the *unit research* . It is proposed by the Director of the Research Unit and approved by the Council scientific.

(7). The coordinators of the research departments ensure the development of scientific activities on areas of competence of *research unit* . They are proposed by the Director and Secretary scientific and are approved by by Scientific Council of *unity of research* .

Chapter IV. *Unit staff of research*

Art. 12. (1). staff of research scientifically of *unity of research* is format from:

- **active members** , representing teachers and researchers, holders of the University „Lucian Blaga ”from Sibiu, students, but also researchers from other organizations, provided in Annex A to this status. Modification of the composition this lists is of competence council scientific;



- **honorary members** , who may be natural or legal persons. The title of honorary member can be agreement of by Council Scientific, people or States associates, which have brought INPUT to development scientific activity of the center.

Head. V. funding and patrimony

Art. 13. Financing *unity of research* it ensure from next resources:

- a) Income realized from contracts of research, consulting, evaluation, survey techniques;
- b) Income realized from organization of scientific events;
- c) Income from sponsorships, donations and subsidies;
- d) Income from other source legally constituted.

Art. 14. (1). Resources financial will be use into the view completion end and goalsunity research, for funding the following categories of costs:

- Spend it with the goods and services for functioning *unity of research* ;
- Costs of capital for dEVELOPMENT and modernization *unity of research* ;
- Costs of personal.

(2). Collection, administration and use resources financial of *unity of research* itdo into the conformity with provisions laws finances publicly and of other acts regulations into the material.

(3). Accounting *unity of research* will be organizer and headed of by direction of specialty within Department generous administration of ULBS.

(4). Activity financial of *unity of research* it register direct into the theaccounting LBUS and runs through accounts university "Lucian Joke " from Sibiu.

(5). The exercise financial you start to 1 January of each year and it finish to 31 December ofthe same year.

Art. 15. "Lucian Blaga" University of Sibiu provides logistical support, material base and facilities of order technical, economic, financial and legal for operation in good condition of *unity research* .

Art. 16. *The research unit* has the use of the equipment purchased through the programs research carried out by him, during the implementation of these projects, equipment that are part of the patrimony of the University „Lucian Joke ” from Sibiu.

Chapter VI. pROVISIONS FINAL

Art. 17. (1) *unit Research* it stops existence into the one from next situations:



ULBS

Universitatea "Lucian Blaga" din Sibiu

Ministerul Educației Naționale

Universitatea "Lucian Blaga" din Sibiu
Prorector Cercetare Științifică și Studii Doctorale

-
- lack activity of research, on a period of 2 years consecutive, found through opinion unfavorable of the Council scientific;
 - to call a cel little bit 2 / 3 from members activity of *the unit of research* ;
 - When activity *unity of research* contrary end his.
- (2). termination activity *unity of research* it approve of by Senate LBUS / councilfaculty / department council.

Art. 18 . amendments of this statute it do what on the base approval SENATE LBUS into the the baseopinion ULBS Scientific Council.

Art. 19. Annexes A and B do part integral of the present status.

Approved into the Meeting SENATE LBUS from date of:

Appendix A.

List with States you have assets *unity of research*

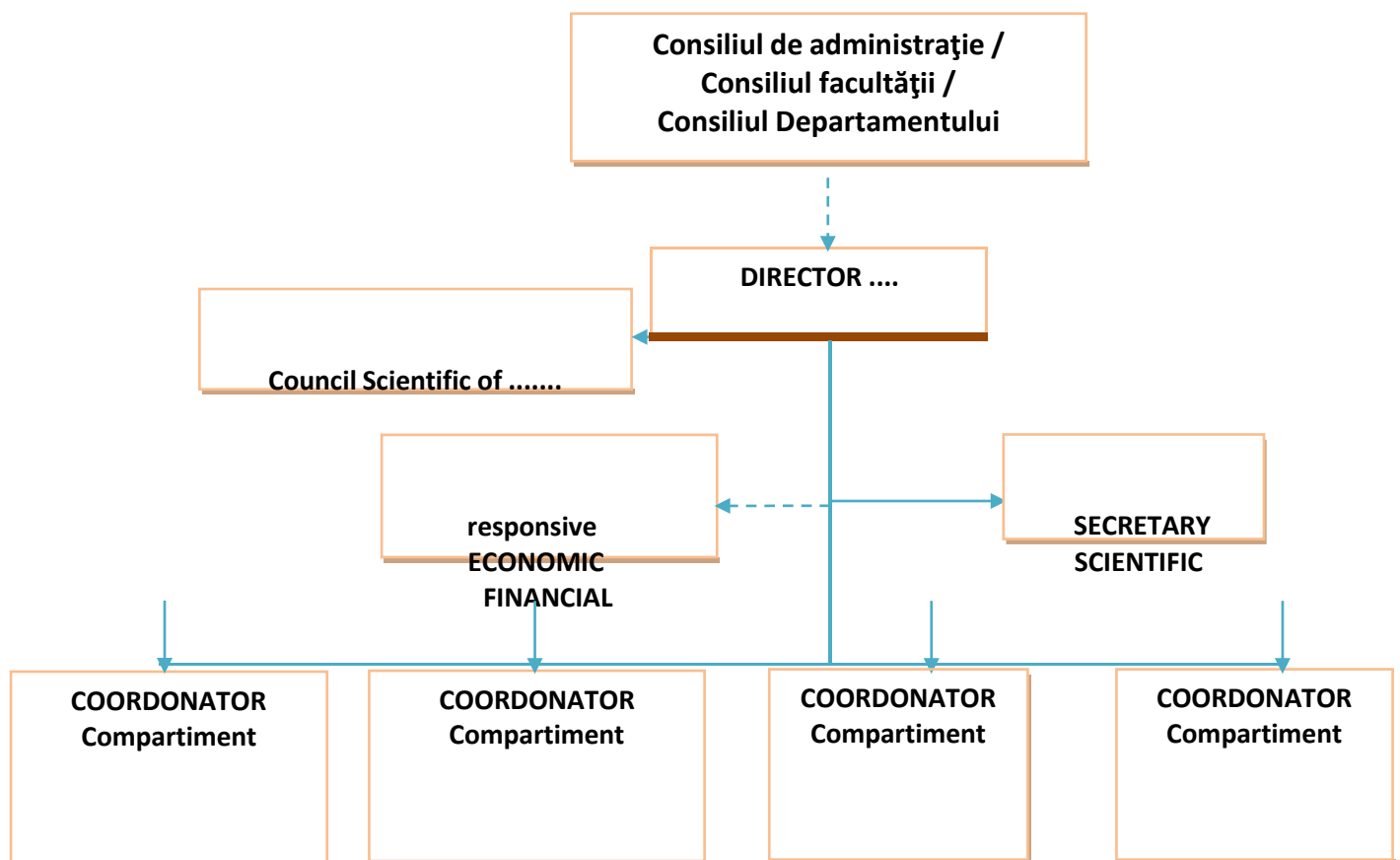
(Se may be take over Table of to the section V)

Appendix B.

ORGANIZATION

**AL CHART University "LUCIAN BLAGA" FROM
SIBIU**

unit of research:



Appendix C.

areas of research scientifically

For fundamental research, they will be selected from the priority areas of the Idea competition <http://www.uefiscdi.gov.ro//>

For applied research, they will be selected from the priority areas of the PCCA competition <http://www.uefiscdi.gov.ro//>